



COMPANY PORTRAIT 2026

What Gruner can do and what we offer



We design today for the world of tomorrow.

As a leading engineering and design consultancy, Gruner offers a comprehensive range of services for both private and public clients. In the Buildings, Infrastructure and Energy sectors, we advise and support our clients throughout the entire life cycle of the buildings and infrastructure: from strategic planning to commissioning and management to refurbishment, demolition and reuse. Our skills, expertise and many years of experience in complex construction projects are what set us apart. Gruner – all according to plan.

Dear Readers,



2025 was a year marked by political and economic uncertainty worldwide. It is in such an environment that the true value of stability becomes apparent. Gruner can look back on a successful financial year in which the company was able to further strengthen its position as a reliable partner for construction and energy projects. Solid growth and a strong market presence are proof of our robust foundations.

With the 'Gruner 2030' strategy, the company is developing consistently and organically – from a Swiss company with international projects to an international group with strong Swiss roots. By opening new offices in Manila, Novi Sad and Rome, we are aiming to develop new markets and expand our expertise. This ensures that our proven quality is maintained at all times, even in demanding projects.

Gruner's expertise focuses on the major challenges of our time. In the energy sector, the spotlight is on decarbonisation. The expansion of hydropower and solar power plants and the design of high-performance grids are making the energy transition technically feasible. In the area of infrastructure, the focus is on mobility and security of supply. In building construction, we are well-equipped to respond comprehensively to the trend towards renovation and energy-efficient refurbishment, thereby safeguarding existing assets.

Gruner's proven 'engineering spirit' is what drives us to constantly look for better solutions. The new internal innovation initiative generated almost 100 ideas in less than two years. One highlight, for example, is the 'Gruner ReUse' service, which uses a new app to further promote the circular economy in the building industry. Progress on sustainability is also being made internally. Despite the company's growth, we were able to further reduce our own carbon emissions.

Dedicated employees are at the heart of this success. Targeted investments in education and training as well as the promotion of internal talent ensure that employees' high level of expertise is maintained in the long term. Gruner is financially sound, broadly positioned and looks to the years ahead with confidence – ready to shape the future with a pioneering spirit and proven reliability.

Yours

Olivier Aebi
CEO, Gruner

Our 2025



↑ Manila: expansion of growth strategy in Southeast Asia

With the establishment of the Manila office in the Philippines – one of the fastest growing energy markets in Southeast Asia – Gruner has consistently pushed ahead with its international growth strategy in 2025. A design office has been set up in the capital to manage the two pump storage projects Wawa and Pakil, amongst other projects. Both of these have been classified as 'Projects of National Significance' by the Department of Energy and are part of the government's Green Lane Fast Track process. Manila was established as the Philippines Business Unit in January 2026.

St. Peters Bach Bridge, Obersaxen

In the canton of Graubünden, a new bridge is being built in Obersaxen over the St. Peters Bach. The roughly 30-metre-deep gorge makes the construction extremely challenging. The 80-metre-long bridge has been designed as a reinforced concrete composite structure. A 450-tonne pneumatic crane was used to mount around 300 tonnes of steel with precision. Gruner has been responsible for the project since the construction project phase as the project lead and is overseeing both the planning and implementation.

↑ Spitalamm dam, Lake Grimsel

The new Spitalamm dam on Lake Grimsel was inaugurated in June 2025. It forms a central section of the replacement structure for the dam dating from the 1930s. Gruner has been an engineering design partner for many years and is responsible for the design of the new arch dam, including implementation planning and on-site construction management.

Social Paediatric Centre, Chemnitz

After eight years of construction, the new Social Paediatric Centre with an early intervention unit was opened in Chemnitz. Gruner Deutschland managed the project on behalf of Poliklinik Chemnitz GmbH and was responsible for the design of the sanitary and fire extinguishing technology, heating, cooling and ventilation as well as the audio and hearing aid equipment. With 2,800 m² of barrier-free space, the Centre looks after children and young people with developmental disorders, disabilities and chronic illnesses.



↑ Ligerz Tunnel, Ligerz on Lake Biel

The Ligerz Tunnel is one of SBB's largest projects and also serves as an outstanding showcase of Gruner's expertise in planning and construction management. With an investment of CHF 4.31 billion and a length of 2.13 kilometres, it is currently one of the most important SBB sites under construction. It will close the last single-track gap between Lausanne and Biel/Bienne and boost the performance and reliability of rail transport in the long term. Gruner has been involved in the project since 2016.

Eurovision: spotlight on Basel

At the 2025 Eurovision Song Contest, Gruner ensured the smooth running of the mega-event with a comprehensive security concept and expert advice. Around 170 million people watched Eurovision from Basel on television, while over 500,000 visitors attended the event. From the preparation of the hosting bid to the event itself, Gruner supported the host city of Basel for event security.

↑ Titlis mountain railway – TITLIS Tower and Peak Station

At an altitude of more than 3,000 metres, Herzog & de Meuron is building the TITLIS Tower and the new Peak Station, an architectural flagship project with international appeal – one of the most challenging construction projects at extreme altitudes in the Alps. Gruner is responsible for providing comprehensive fire safety support throughout all phases, carrying out complex simulations and heat measurements and thereby laying the groundwork for a safe and cost-effective implementation.

Image: © TITLIS Bergbahnen / Elmar Bossard

Restoration of the 120 kV Nseke-RO line, Congo

The 120 kV Nseke-RO line connects the Nseke hydroelectric power station (260 MW) to the Kolwezi West switching station and is an essential part of the power supply in the south-eastern part of the Democratic Republic of Congo. Due to a prolonged outage, the availability of renewable energy for industrial consumers was significantly reduced. SNEL and METALKOL commissioned the Sescon/Gruner association to completely renovate the transmission line. Gruner took on all the main engineering and management tasks.

Growth thanks to good acquisitions and market expansion

TURNOVER IN CHF

174.0 million

PROJECTS

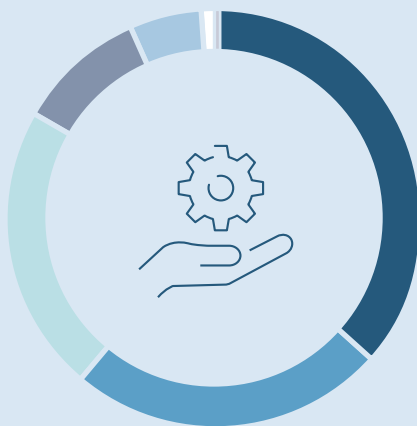
6,405

Turnover by market
in %



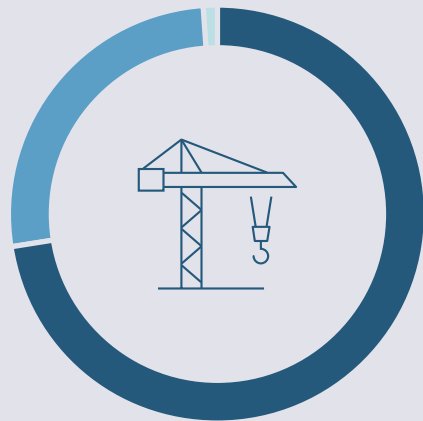
79% ■ Switzerland
21% ■ Rest of the world

Turnover by sector
in %



33% ■ Infrastructure
22% ■ Structural design, geotechnical engineering
20% ■ Energy
10% ■ Fire safety, Safety & security
9% ■ Building services
5% ■ Environment
1% ■ General planning

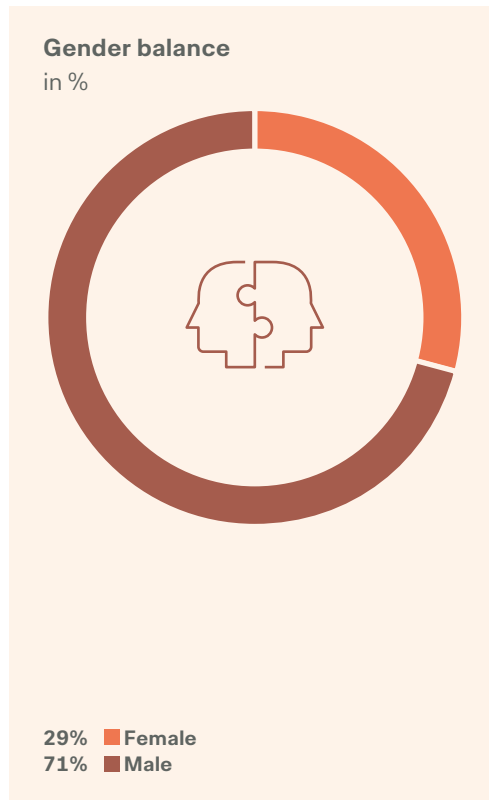
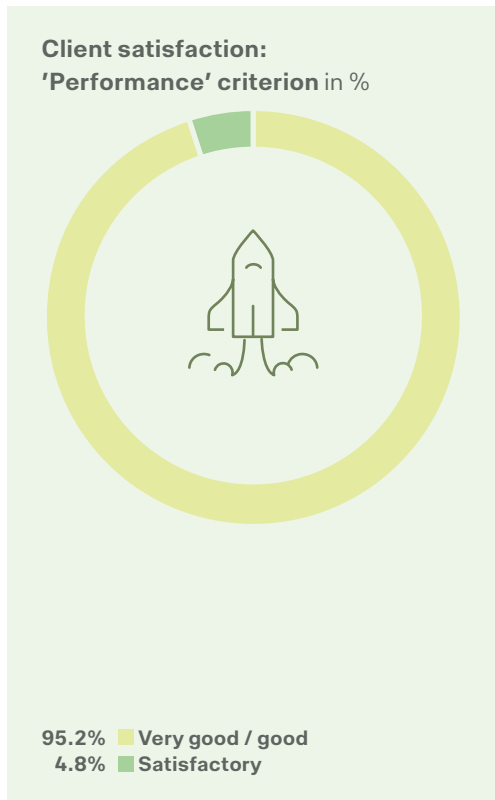
Number of projects by contract amount in %



74% ■ Small projects (up to CHF 20,000)
25% ■ Medium projects (CHF 20,001 – 500,000)
1% ■ Large projects (from CHF 500,001)

CLIENT SATISFACTION

More than half of our clients particularly highlight the **professional and trusting working** relationship.



EMPLOYEES

1,249

NATIONALITIES

56

APPRENTICES & INTERNS

77

Our expertise



INFRASTRUCTURE ENGINEERING

Sustainable transport and energy systems, innovative BIM design and interdisciplinary expertise for future-proof infrastructure solutions



STRUCTURAL DESIGN

Sustainable design of the right supporting structure for buildings, support for creative architectural ideas, and preservation and enhancement of the value of buildings



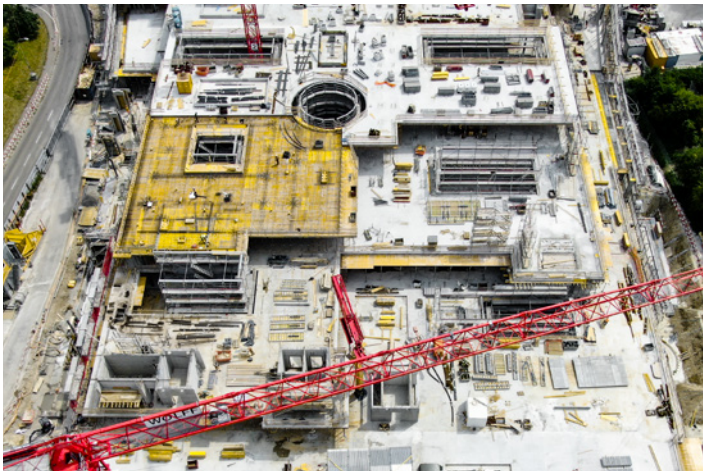
ENERGY PRODUCTION AND DISTRIBUTION

Support for energy projects: from production facilities such as dams to transmission systems such as high-voltage lines and smart grids – from feasibility testing to commissioning and modernisation



BUILDING SERVICES AND BUILDING ENVIRONMENTAL CONTROL

Development of intelligent overall concepts for buildings that take into account the entire life cycle, including simulation of light, shade and climate before construction begins



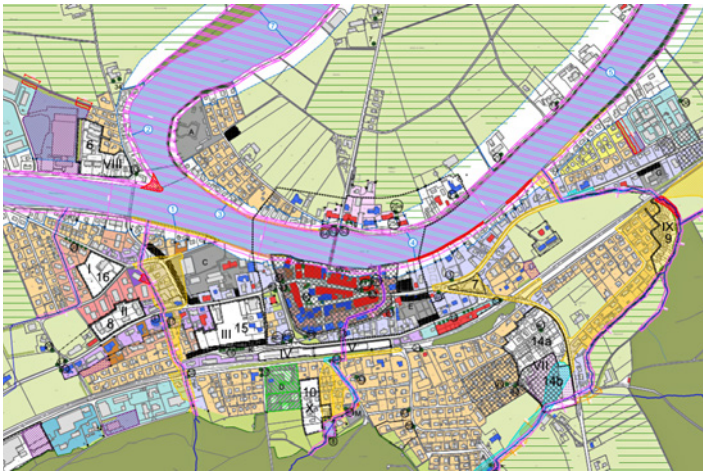
GENERAL PLANNING

Comprehensive project management, seamless coordination between design and execution as well as precise cost, scheduling and quality control for successful construction projects



ENVIRONMENT

Development of responsible, environmentally friendly and safe planning for the benefit of the environment and society



SPATIAL AND TRAFFIC PLANNING

Innovative site development and sustainable mobility concepts for future-oriented spatial and urban planning



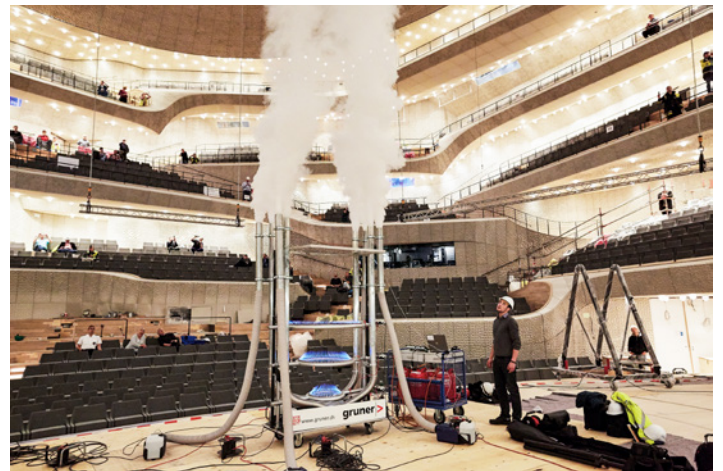
WATER MANAGEMENT

Innovative solutions for environmentally friendly water management, from flood prevention to urban hydraulics



GEOTECHNICAL ENGINEERING

Ensuring the stability of buildings through innovative, efficient and sustainable concepts



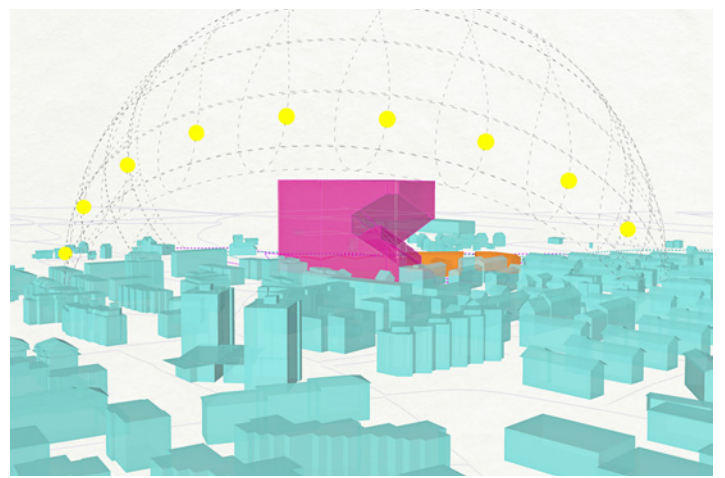
FIRE SAFETY

In accordance with numerous guidelines and laws, we draw on our specialist expertise and innovative methods to deliver comprehensive, effective and secure solutions



SAFETY AND SECURITY

Comprehensive risk analysis, tailor-made security concepts and reliable implementation for infrastructures and companies



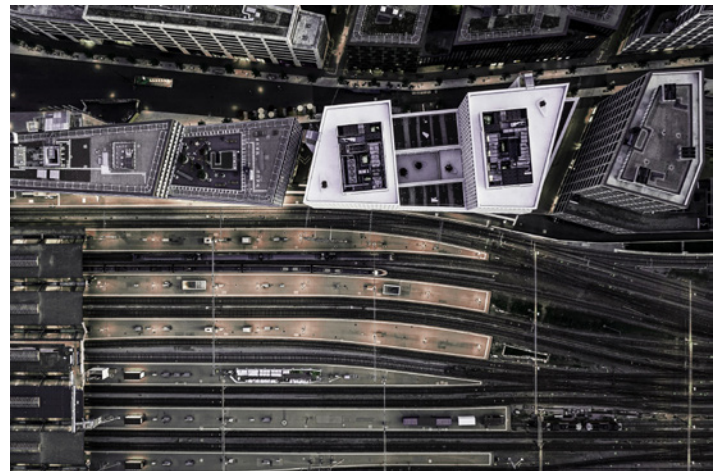
DIGITAL ENGINEERING SOLUTIONS

Innovative BIM technology, data-driven decision-making processes and agile project methods for the digital transformation of the construction industry



GEOMATIC ENGINEERING

High-precision geodata acquisition, enabling innovative 3D modelling and intelligent use of big data throughout the project life-cycle



REAL ESTATE ENGINEERING

Value-based real estate development, digital project valuation and sustainable ESG portfolio optimisation for investment decisions

Sustainability in action

PERFORMANCE

Holistic solutions

As a renowned engineering consultancy, Gruner makes a lasting impact on the environment, society and the economy. Gruner focuses on resource-conserving solutions, efficient processes, innovative building technology and the circular economy. Gruner promotes quantifiable sustainability with comprehensive environmental services and tools. Consultations integrate environmental, economic and social aspects. Sustainability is part of the corporate strategy and is bolstered by a competence centre. Gruner also pays attention to the social, economic and environmental impact of energy infrastructure projects such as hydropower plants. With expertise and a strong network, Gruner is committed to research, teaching and industry initiatives – for sustainable design and construction.

ENVIRONMENT

Conscious use of resources

Gruner strives to use natural resources responsibly and reduce its environmental impact. We focus on energy-efficient technology, renewable energy and sustainable mobility solutions. Environmental aspects such as recycling, resource-conserving materials and efficient use of space are consistently integrated into projects. Gruner is also developing its internal processes in an environmentally conscious way – for example through waste prevention, e-mobility and reuse. Gruner uses its expertise to help building owners meet environmental requirements. By regularly reviewing environmental measures, Gruner remains a reliable partner for sustainable design and construction.

SOCIAL

Attractive working environment

Gruner believes social responsibility is part of sustainable corporate governance. Gruner offers an attractive, safe working environment and promotes talent throughout the entire employment cycle. We focus on flexibility, work-life balance and individual development. The health and well-being of employees is supported through occupational safety, ergonomic design and preventative measures. Advice and awareness-raising are also part of the package. Gruner is committed to diversity, equal opportunities and the targeted promotion of women. International recruitment and a wide range of training opportunities strengthen the employer brand. Thanks to our university presence and employer branding, Gruner remains visible and attractive as a future-oriented employer.

GOVERNANCE

Reliable structures

For Gruner, responsible corporate management is a key component of sustainable success. On the basis of our Code of Conduct, Gruner's employees undertake to act with integrity, in accordance with the law and in a sustainable manner. Transparent reporting channels, clear processes and an effective risk and control system create security and promote a culture of openness and reliability. Thanks to regular training sessions and structured dialogue formats, Gruner's employees are continually developing. The protection of personal data is also firmly established. Binding data protection guidelines and clear processes ensure the careful handling of information – and strengthen trust in Gruner's structures over the long term.



Find out more in our latest Sustainability Report.

Gruner employs more than 1,200 highly qualified experts in over 35 offices in Switzerland, Germany, Austria, France, Italy, Serbia, Georgia and the Philippines, as well as at countless project locations around the world, which means that we are always close to our clients and right where development and construction are taking place.

Thanks to interdisciplinary collaboration, we set standards in engineering methods and the use of digital processes, and are constantly evolving together with our clients. Gruner, an independent family-owned business headquartered in Basel, Switzerland, has been offering innovation and inspiration since 1862.

**Gruner in Switzerland**

Appenzell, Basel, Berneck, Brugg, Degersheim, Flawil, Fribourg, Geneva, Köniz, Lucerne, Martigny, Oberwil BL, Renens VD, Roggwil, Sion, Stein AG, St. Gallen, Teufen, Zollikofen, Zug, Zurich

**Gruner International**

Austria: Vienna; France: Paris; Georgia: Tbilisi; Germany: Berlin, Chemnitz, Hamburg, Kiel, Cologne, Leipzig, Munich, Stuttgart; Italy: Milan, Rome; Philippines: Manila; Serbia: Belgrade, Novi Sad

Gruner

St. Jakobs-Strasse 199, 4020 Basel, Switzerland
Tel. +41 (0)61 317 61 61
info@gruner.ch | www.gruner.ch